

# GET OUTDOORS AT OUTDOOR RETAILER

The Elastic Suite locals put together some nearby hot spots for when you want to get off the show floor and catch some fresh air and sunshine while in Salt Lake City.

## Hiking & Walking Trails

### Jordan River Walkway

A well-kept paved path along the Jordan River. Accessible from multiple spots from downtown SLC to Lehi. Nice wildlife spotting and rad river views the whole time.

### City Creek Canyon Trails

Easy Hike/Walk. 2 miles from downtown and the Salt Palace. Avoids the ski traffic in other canyons.



### Sugarhouse Park

Beautiful park with nice walking paths full trees and ponds, and a breathtaking view of Mount Olympus.

### Great Salt Lake State Park

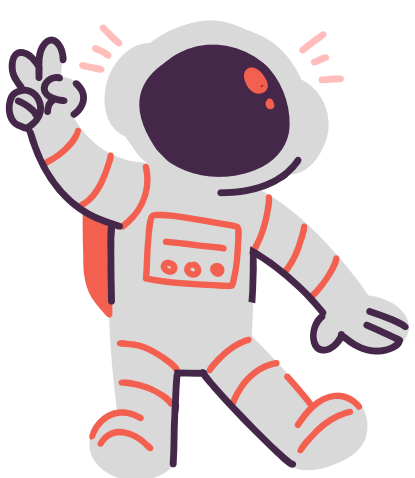
Awesome views of the Great Salt Lake and Antelope Island. Nice to walk around and get some fresh air away from the city. About a 30 minute drive from downtown.



### Vans Skatepark SLC

World-class skatepark very close to downtown. Olympic size bowls all the way down to beginner obstacles. Bring your helmet. Fill out online waiver.

## Get out there



### Bonneville Salt Flats

A true MUST see. Pretty much like going to the moon but only driving 1.5 hours from SLC. Who knew so much salt could be so beautiful?!

### Wheeler Farm

A true working farm to walk around and check out animals, gardens and ponds. About a 15 minute drive from downtown.