

GET OUTDOORS AT WINTER SPORTS MARKET

The Elastic Suite locals put together some nearby hot spots for when you want to get off the show floor and catch some fresh air and sunshine while in Salt Lake City.

Hiking & Walking Trails

Jordan River Walkway

A well-kept paved path along the Jordan River. Accessible from multiple spots from downtown SLC to Lehi. Nice wildlife spotting and rad river views the whole time.

City Creek Canyon Trails

Easy Hike/Walk. 2 miles from downtown and the Salt Palace. Avoids the ski traffic in other canyons.



Sugarhouse Park

Beautiful park with nice walking paths full trees and ponds, and a breathtaking view of Mount Olympus.

Great Salt Lake State Park

Awesome views of the Great Salt Lake and Antelope Island. Nice to walk around and get some fresh air away from the city. About a 30 minute drive from downtown.

Go Skating



Vans Skatepark SLC

World-class skatepark very close to downtown. Olympic size bowls all the way down to beginner obstacles. Bring your helmet. Fill out online waiver.

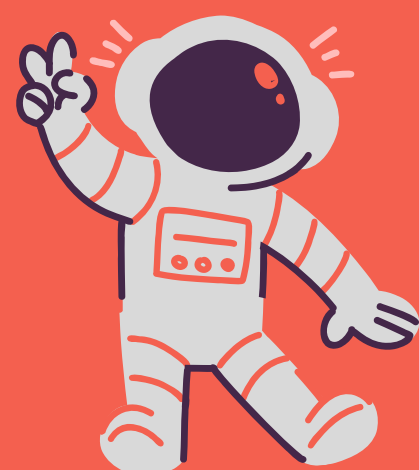
They don't call it the greatest snow on earth for nothing. Get up the hill EARLY to beat traffic, get a parking spot and get some fresh carves in before it gets packed out. Take your pick of amazing resorts to shred!

- Snowbird
- Alta
- Solitude
- Brighton
- Nordic Valley
- Park City

Go Shredding



Get out there



Bonneville Salt Flats

A true MUST see. Pretty much like going to the moon but only driving 1.5 hours from SLC. Who knew so much salt could be so beautiful?!

Wheeler Farm

A true working farm to walk around and check out animals, gardens and ponds. About a 15 minute drive from downtown.